

▶ The new **Condor 322 dc** incorporates the very latest fishfinder technology in a compact unit all at an extremely affordable price. Thanks to the special transom mount DualCone 83/200 kHz transducer this unit provides a very detailed description of what lies beneath the surface.

When searching the actual cone angle can be as much as 120°, making the **Condor 322 dc** a top performing fish searcher.

▶ The large, high resolution 5" LCD screen of the **Condor 322 dc**, with its 320 x 240 pixels and 16 levels of gray, provides perfect visibility in any light condition, even in sunlight or when wearing polarized sunglasses.

The white LED backlighting is dimmable and gives great clarity when used at night.

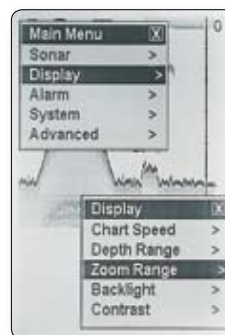
▶ The windows menu system guides the user through all the advanced functions of the **Condor 322 dc**, making using this unit very simple and intuitive.

▶ Single plug connector for both power and transducer enables installation and removal of the **Condor 322 dc** in a matter of seconds, while the compact IPX7 waterproof housing makes it perfectly suitable for use in marine environments.

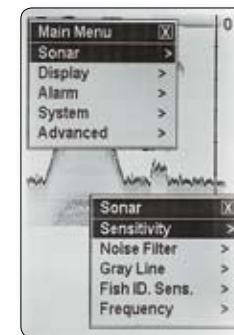
83/200 kHz transom transducer included



High resolution, Dual Cone and a windows menu in an incredible fishfinder!



▶ The *Zoom Range* lets you to enlarge some certain depth segment, so that you can see small details at any deep level.



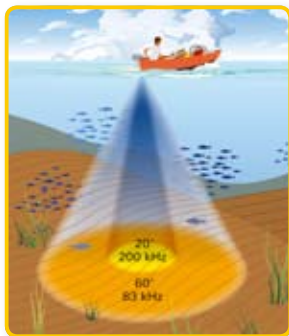
◀ The *Condor 322 dc* features the *Sensitivity* function that helps you to determine how echoes will be displayed on the screen.

Condor 322 dc

83/200 kHz Fishfinder

► FEATURES

- Large, high resolution, black and white 5" LCD screen, provides perfect visibility even with polarized sunglasses
- High resolution 320 x 240 pixel with 16 gray levels
- DualCone exclusive technology, for the widest coverage in fish searching
- Dual frequency 83/200 kHz operation
- Output power: 2400W peak (300W RMS)
- Depth capability of over 800 ft (240 meters)*
- Sophisticated Fish ID recognition software with the digital readout of the depth above fish symbols
- Big digital depth, temperature and voltage readouts
- Dual function Shadeline, that gives relevant information about the nature of the bottom
- Multiple level zoom function, to enlarge the image to any scale
- Automatic range feature with direct control and instant switching to manual
- Alarms: shallow water, fish and low battery
- Hydrodynamic transom mount 83/200 kHz DualCone transducer with cone angles of 20°/ 60° @ -10dB (90°/ 120° for fish searching), with built in temp probe, 20' cable (6m), suitable for high boating speed
- Memory that keeps all the settings, even when the unit is switched off
- High intensity, dimmable backlighting for night use
- TCG control with high sensitivity receiver, for outstanding depth performance
- Multilingual menu system, with 21 memorized languages
- Operation voltage: 12 V
- Dimensions: 6.3" x 6.3" x 2.6" (160 x 160 x 65 mm)



Dual Cone technology: a detailed view with a wide coverage area

- The precision of the 20° cone beam provides high accuracy returns allowing a detailed view of fish, structure and bottom profile
- The broad 60° cone beam provides wide search area for fish and bait fish

The 60° cone beam provides a circle coverage ◀ whose diameter is equal to 1.15 times your depth.

