

Condor 320

High performance and a large high resolution screen along with the convenience of a window menu system in this extremely affordable fishfinder!

The new **Condor 320** represents the latest achievement in fishfinding technology.

Thanks to the new Condor's high sensitivity receiver, this new unit combines amazing depth capability with perfect, effective fish detection.

The bright high contrast screen of the **Condor 320**, with its 320 x 240 pixels, provides high resolution images, with 16 gray levels. It is perfectly viewable in full sun light or when wearing polarized sunglasses. The white, dimmable LED backlighting, allows the screen of the **Condor 320** to be viewed under any light conditions, which makes this unit especially suitable for night use.

A convenient window menu system makes using the **Condor 320** extremely simple and intuitive, guiding the user through all the advanced functions of the unit. Each function can be easily and conveniently accessed through a simple, self-explaining menu system, that enables the user to operate the unit in just few minutes.

The combination of the "OvalPad" on the top, with the six keys on the bottom, make access to the menu options extremely simple and intuitive.



The convenient "-" and "+" direct access keys, allow the user to exit the auto-range mode instantly and adjust the depth range manually, without opening any menu, with the touch of a single key. In the same way, it is possible to return to the automatic mode simply by pressing the "-" and "+" keys together.

The hydrodynamic 200 kHz transom mount transducer of the **Condor 320** has a built-in water surface temperature sensor, and provides excellent performance at all boating speeds, up to 40 knots.

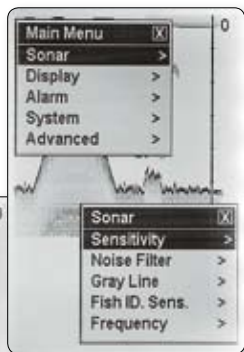
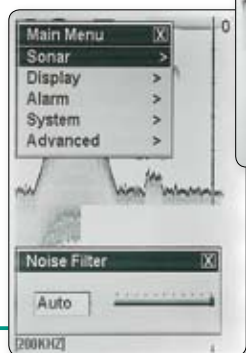
Packed in a compact housing, the **Condor 320** easily fits on any dash board. The use of a single plug for both power and transducer means installing and removing the unit takes only a matter of seconds.



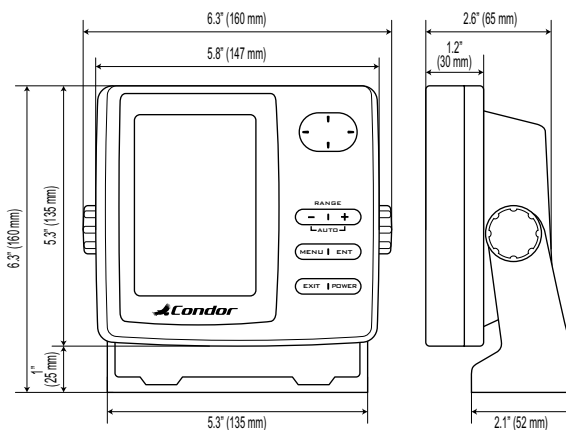
➤ 200 kHz transom transducer included.



The Condor 320 features the Sensitivity function that helps you to determine how echoes will be displayed on the screen.



➤ The Noise Filter function reduces the undesired signals that come from your boat engine, turbulence or electrical sources.





320

200 kHz Fishfinder

- Large, high contrast, 5" LCD screen, provides perfect visibility even with polarized sunglasses
- High resolution 320 x 240 pixel with 16 levels of gray
- Operation frequency: 200 kHz
- Output power: 4000W peak (500W RMS)
- Depth capability of over 1480 ft (450 meters)*
- Sophisticated Fish ID recognition software with the digital readout of the depth above fish symbols
- Big digital depth, temperature and voltage readouts
- Adjustable chart speed
- Dual function gray Shadeline, that gives relevant information about the nature of the bottom
- Keel offset function, for precision depth readouts
- Image of instantaneous echo in column
- Automatic range feature with direct control and instant switch to manual
- Multiple level zoom function, allows to enlarge the image at any scale
- Alarms: shallow water, fish, low battery
- Hydrodynamic transom mount transducer with built in temp probe, as standard, suitable for high boating speed, cable length 20 ft (6 m)
- Memory that keeps all the settings even when the unit is switched off
- High intensity, dimmable backlighting for night use
- TGC control with high sensitivity receiver, for outstanding depth performance
- Compact waterproof housing
- Multilingual menu system, with 16 languages: English, Spanish, French, German, Italian, Portuguese, Dutch, Norwegian, Swedish, Danish, Finnish, Polish, Hungarian, Russian, Turkish and Greek
- Operation voltage: 12 V
- Dimensions: 6.3" x 6.3" x 2.6" (160 x 160 x 65 mm)



**Advanced functions
and high-tech receiver
in this new Condor
compact housing fishfinder**

* Normally, fishfinders will show deeper readings in fresh water than in salt water. Actual depth capability depends on:
1) Transducer installation, 2) Plankton, 3) Salinity. In salt water, air bubbles and zooplankton are the two most important factors affecting performance, and can change from day to day. Also rotting plants, producing as much as 2 feet of muck, affects the performance of any fishfinder.