

# Condor 242 dc

## The advantages of the exclusive DualCone fishfinding technology in a compact and affordable unit!



The newest **Condor 242 dc** gives you all of the advantages of a wide-angle fishfinding in a convenient compact housing.

Thanks to its dual frequency 83/200 kHz engine, and to the special DualCone hydrodynamic transom mount transducer, included in the package, it can reach the amazing coverage angle of 120° for fish searching (nominal 60° at -3dB). With the Condor's exclusive DualCone technology, you can scan a wider area below your boat, for an unprecedented fish searching capability, and bigger catches!



The convenient menu system of the **Condor 242 dc**, with its easy and intuitive four-tab user interface, will guide you through all the advanced functions of the unit, making the selection of each feature a snap. When the unit is switched off, the adjustment and settings are permanently stored in the internal memory. When you turn the unit back on, you will find your settings from the last session.

The large 4.3" triple supertwist LCD screen of **Condor 242 dc** provides crisp and clear images and is perfectly viewable from any angle and in any light condition, even wearing polarized sunglasses. The tilting and swiveling base allows the display to be oriented quickly in any direction for the most convenient use. The dimmable white led backlighting allows perfect viewing in all light conditions and during the night.

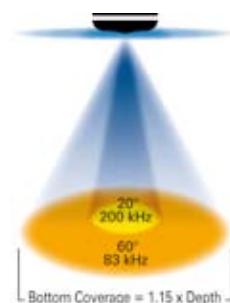
The special exclusive Dual Cone transom mount transducer of the **Condor 242 dc** works perfectly in high boating speeds, thanks to its hydrodynamic profile. The built-in temperature sensor, allows the monitoring of the water surface temperature, which is continuously shown on the top left corner of the screen.

Thanks to its compact housing, the **Condor 242 dc** can easily fit on any dash board, while its single power-transducer jack means installing and removing the unit takes only a matter of seconds.



### Dual Cone technology: a detailed view with a wide coverage area

- The precision of the 20° cone beam provides high accuracy returns allowing a detailed view of fish, structure and bottom profile
- The broad 60° cone beam provides wide search area for fish and bait fish



- The 60° cone beam provides a circle coverage whose diameter is equal to 1.15 times your depth.

# Condor 242 dc PORTABLE

All the advanced features of the Condor 242 dc with the advantage of the portability, thanks to the waterproof battery pack (uses 8AA batteries)



► The unit can be conveniently folded into the battery box for carrying it more easily.

The Condor 242 dc portable ◀ is available in two different versions, with floating transducer or with suction cup transom transducer.



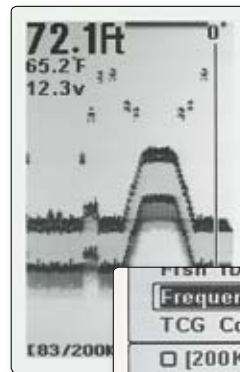
## 242 dc 83/200 kHz Fishfinder

- Large, high contrast, 4.3" triple supertwist LCD screen, provides perfect visibility even with polarized sunglasses
- High resolution 240 x 128 pixel with 4 levels of gray
- DualCone exclusive technology, for the widest coverage in fish searching
- Dual frequency 83/200 kHz operation
- Output power: 1200W peak (150W RMS)
- Depth capability of over 500 ft (160 meters)\*
- Hydrodynamic transom mount 83/200 kHz DualCone transducer with cone angles of 20°/ 60° @ -3dB (90°/ 120° for fish searching), with built in temp probe, 20' cable (6m), suitable for high boating speed
- Sophisticated Fish-recognition software with the digital readout of the depth above fish symbols
- Big digital depth and temperature readouts
- Adjustable chart speed
- Memory that keeps all the settings even when the unit is switched off
- Dual function gray Shadeline™, that gives relevant information about the nature of the bottom
- Automatic range feature
- Image of instantaneous echo in column
- Alarms: shallow water, fish, low battery
- High intensity, fully dimmable backlighting for night use
- Outstanding depth performance, thanks to the high sensitivity receiver
- Compact waterproof housing
- Multilingual menu system, with 16 memorized languages
- Operating voltage: 12 V
- Dimensions: 7.5" x 4.3" x 3.9" (190 x 110 x 98 mm)

The suction cup transducer ◀ is suitable for transom mounting on any kind of boat, so it is particularly well suited for rented boats.



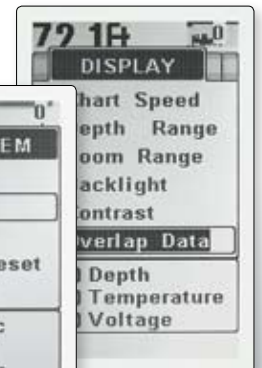
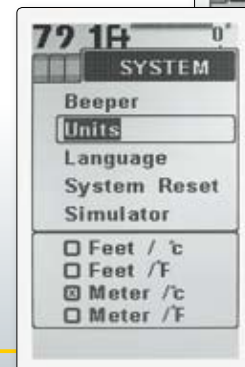
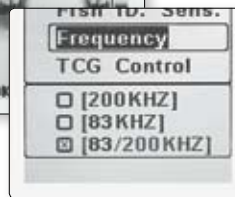
► The floating transducer is suitable for standing fishing. Thanks to two threaded brass inserts on the back, it can be easily mounted on radio-controlled bait boats for Carp-fishing.



► The unit can be either set for single cone operation, large 83 kHz or narrow 200 kHz, at your convenience, or for DualCone scanning, as shown in this image.



The convenient menu system, ◀ with its intuitive four-tab interface, allows you to access all of the advanced functions of Condor 242 dc easily and quickly.



\* Normally, fishfinders will show deeper readings in fresh water than in salt water. Actual depth capability depends on:  
1) Transducer installation, 2) Plankton, 3) Salinity. In salt water, air bubbles and zooplankton are the two most important factors affecting performance, and can change from day to day. Also rotting plants, producing as much as 2 feet of muck, affects the performance of any fishfinder.